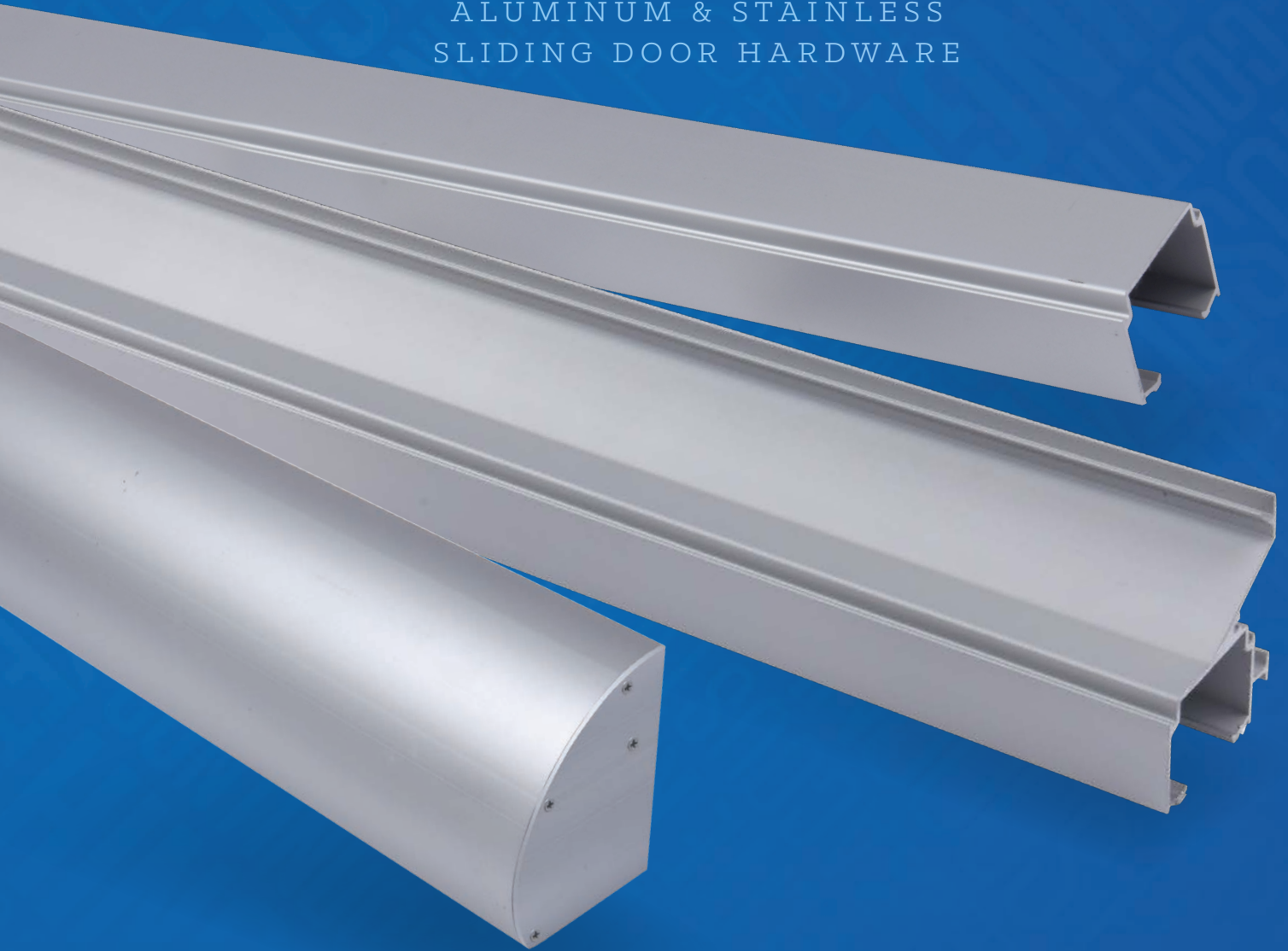




# SLIDING

ALUMINUM & STAINLESS  
SLIDING DOOR HARDWARE





## SLIDING DOOR HARDWARE INDEX:

	Page
<b>Aluminum:</b>	
Bi-Fold Sliding Door Hardware .....	SL4
Bi-Parting Sliding Door Hardware .....	SL7, SL8, SL9, SL10
By-Passing Sliding Door Hardware .....	SL2, SL3, SL5, SL6
Side Wall Mount Sliding Door Hardware .....	SL7
Pocket Door Hardware .....	SL8
Pocket Door Hardware with Frame Kit .....	SL9, SL10
<b>Stainless Steel:</b>	
Barn Door Hardware — Side Mount .....	SL12
Barn Door Hardware — Top Mount .....	SL11
<b>Accessories:</b>	
Drywall Spacer for Stainless Steel Track .....	SL16
Pocket Door Kit-7'-9' Extension Kit .....	SL17
Sliding Door Hardware Accessories .....	SL13-SL19
Sliding Door Hardware Adapter Kit .....	SL18
Sliding Door Hardware -Converging Kit .....	SL19
Soft Close for Aluminum Sliding Door Hardware .....	SL15

## NUMERICAL INDEX:

SC.....	SL15	SLAL-75-BPF.....	SL3	SLAL-250-PDKT-6M-EXT .....	SL10
SC-LITE .....	SL15	SLAL-250-BP-2DR .....	SL5	SLAL-250-PK-6M-EXT48.....	SL10
SCBY.....	SL15	SLAL-250-BP-4DR.....	SL5	SLAL-250-SW .....	SL8
SCBY-LITE .....	SL15	SLAL-250-BPF-2DR.....	SL6	SLSS-FG.....	SL13
SL-BCC.....	SL13	SLAL-250-BPF-4DR .....	SL6	SLSS-DWS-6.....	SL16
SL-RD.....	SL7	SLAL-250-PD .....	SL8	SLSS-DWS-8.....	SL16
SL-SQ18.....	SL7	SLAL-250-PDKIT .....	SL9	SLSSI-6.....	SL11
SL-SQ20.....	SL5, SL8	SLAL-250-PDKIT-EXT.....	SL10	SLSSI-6-SC.....	SL11
SL-WG.....	SL13	SLAL-250-PDKT-EXT-48.....	SL10	SLSSI-8.....	SL11
SLAL-CNVG-KIT .....	SL19	SLAL-250-PDKIT-48"DR .....	SL9	SLSSI-8-SC.....	SL11
SLAL EXT KIT.....	SL17	SLAL-250-PDKIT-6 .....	SL9	SLSS2-6 .....	SL12
SLAL EXT KIT 48"DR .....	SL17	SLAL-250-PDKIT-6-48" .....	SL9	SLSS2-6-SC.....	SL12
SLAL-134-KIT .....	SL18	SLAL-250-PDKIT-6-EXT .....	SL10	SLSS2-8 .....	SL12
SLAL-75-BF2DR.....	SL4	SLAL-250-PDK-6-EXT48" .....	SL10	SLSS2-8-SC.....	SL12
SLAL-75-BF4DR.....	SL4	SLAL-250-PDKIT-6M .....	SL9	SWBP-BRKT .....	SL14
SLAL-75-BP .....	SL2	SLAL-250-PDKT-6M-48" .....	SL9	SWPD-LPBRKT .....	SL14

## RATING SYMBOLS LEGEND



ANSI/BHMA CERTIFIED. Certified sliding door hardware complies with American National Standard for Sliding and Folding Door Hardware ANSI/BHMA A156.14, and is listed in the BHMA Certified Products Directory.

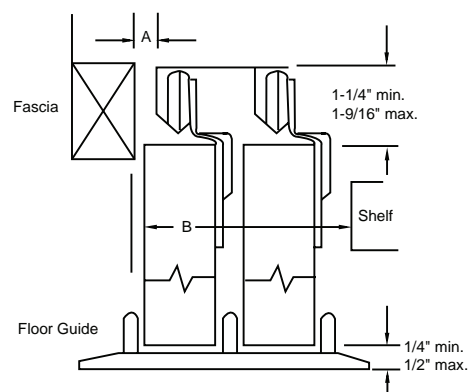
# BY-PASS

## SLIDING DOOR HARDWARE

### ALUMINUM SIDE MOUNT TRACK SYSTEM

- Designed for Multi-family Applications
- Up to 1⅜" Doors
- For Sliding Doors up to 75 lbs. Each
- 5-year Warranty

SKU	TRACK LENGTH
SLAL-75-BP-48	46 ½"
SLAL-75-BP-60	58 ½"
SLAL-75-BP-72	70 ½"
SLAL-75-BP-96	94 ½"



DOOR THICKNESS	¾"	1⅜"
DIMENSION A	0"	7/8"
DIMENSION B	2 ¾"	4"

#### Complete Kits Include:

- (1) Track
- (1) Floor Guide With Steel Bracket
- (2) Front Hangers
- (2) Back Hangers
- (2) Brass Pulls
- (2) Chrome Pulls



# BY-PASS with FASCIA

## SLIDING DOOR HARDWARE

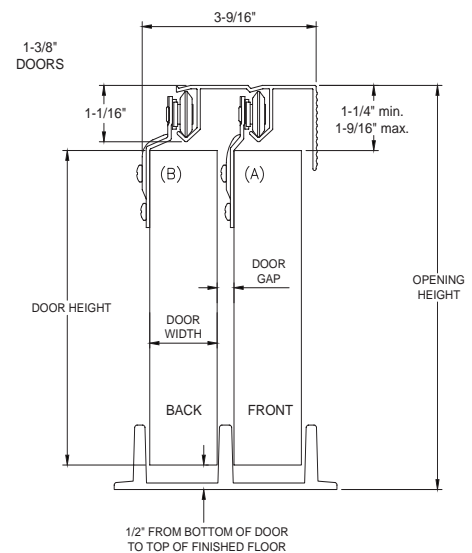
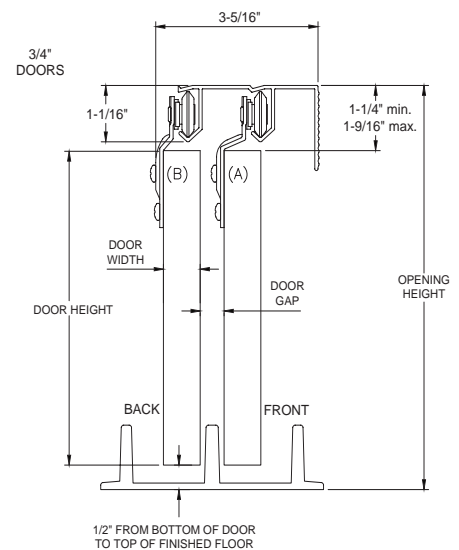
### ALUMINUM SIDE MOUNT TRACK SYSTEM

- Designed for Multi-family Applications
- Up to 1⅜" Doors
- For Sliding Doors up to 75 lbs. Each
- 5-year Warranty

SKU	TRACK LENGTH
SLAL-75-BPF-48	48"
SLAL-75-BPF-60	60"
SLAL-75-BPF-72	72"
SLAL-75-BPF-96	96"

#### *Complete Kits Include:*

- (1) Track
- (1) Floor Guide With Steel Bracket
- (2) Front Hangers
- (2) Back Hangers
- (2) Brass Pulls
- (2) Chrome Pulls



# BI-FOLD

## SLIDING DOOR HARDWARE

### ALUMINUM TOP MOUNT TRACK SYSTEM

- Designed for Multi-family Applications
- 1 $\frac{3}{8}$ " To 1 $\frac{3}{4}$ " Doors
- For Folding Doors up to 24" Wide and up to 75 lbs. Each
- Meets ADA Push Force Requirements
- 5-year Warranty

#### TWO DOOR SYSTEMS

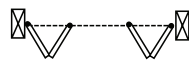


SKU	TRACK LENGTH
SLAL-75-BF2DR-36	36"
SLAL-75-BF2DR-48	48"

*Two Door Complete Kits Include:*

- |                  |                   |
|------------------|-------------------|
| (1) Track        | (1) Aligner       |
| (1) Top Pivot    | (1) Wood Knob     |
| (1) Bottom Pivot | (4) Brass Hinges  |
| (1) Roller       | (4) Chrome Hinges |
| (1) Snugger      |                   |

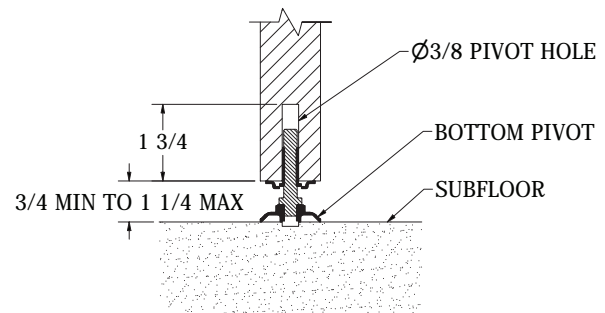
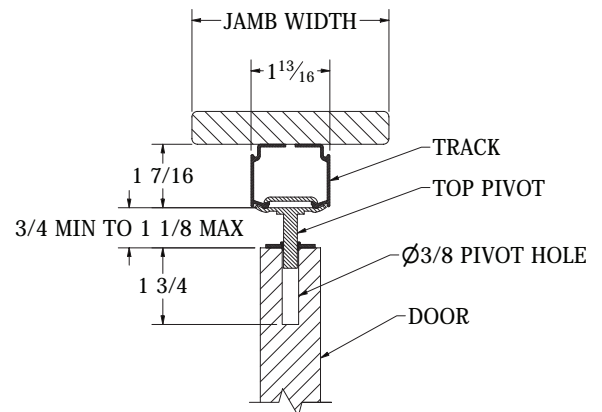
#### FOUR DOOR SYSTEMS



SKU	TRACK LENGTH
SLAL-75-BF4DR-60	60"
SLAL-75-BF4DR-72	72"
SLAL-75-BF4DR-96	96"

*Four Door Complete Kits Include:*

- |                   |                   |
|-------------------|-------------------|
| (1) Track         | (2) Aligners      |
| (2) Top Pivots    | (2) Wood Knobs    |
| (2) Bottom Pivots | (8) Brass Hinges  |
| (2) Rollers       | (8) Chrome Hinges |
| (2) Snuggers      |                   |





# BY-PASS

## SLIDING DOOR HARDWARE

### ALUMINUM TOP MOUNT TRACK SYSTEM

- ▶ Commercial Grade for 1⅜" To 1¾" Doors
- ▶ For Sliding Doors up to 250 lbs. Each
- ▶ ANSI/BHMA A156.14 Grade 1 Certified to 100,000 Cycles Including Soft Close Feature
- ▶ Hangers with Heavy-Duty Ball Bearing Wheels
- ▶ Meets ADA Push Force Requirements
- ▶ 5-Year Warranty

### TWO DOOR SYSTEMS

SKU	TRACK LENGTH
SLAL-250-BP-2DR-48	48"
SLAL-250-BP-2DR-60	60"
SLAL-250-BP-2DR-72	72"
SLAL-250-BP-2DR-96	96"
SLAL-250-BP-2DR-144	144"

#### Complete Kits Include:

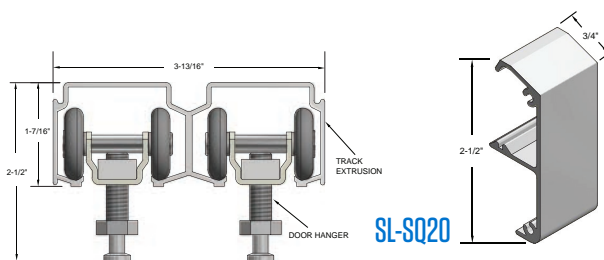
- (1) Track – Mill Finish
- (2) Universal Hardware Packs,  
Each Consist Of:
  - (2) Ball Bearing Heavy Duty Hangers
  - (2) Snap-In Door Brackets
  - (2) In-Track Stops
  - (1) Angle Stop
  - (1) Bumper Stop
  - (1) Door Guide
- Heavy Duty Floor Guides

### FOUR DOOR SYSTEMS

SKU	TRACK LENGTH
SLAL-250-BP-4DR-48	48"
SLAL-250-BP-4DR-60	60"
SLAL-250-BP-4DR-72	72"
SLAL-250-BP-4DR-96	96"
SLAL-250-BP-4DR-144	144"

#### Complete Kits Include:

- (1) Track – Mill Finish
- (4) Universal Hardware Packs,  
Each Consist Of:
  - (2) Ball Bearing Heavy Duty Hangers
  - (2) Snap-In Door Brackets
  - (2) In-Track Stops
  - (1) Angle Stop
  - (1) Bumper Stop
  - (1) Door Guide
- Heavy Duty Floor Guides



### OPTIONS:

- ▶ Soft Close / Open – Specify “SCBY”  
For Both Directions Order (2) Sets SCBY for Doors 120 lbs.-150 lbs. Each
- ▶ Light Duty Soft Close / Open - Specify SCBY-LITE  
Both Directions order 2 SCBY-LITE for Doors 65 lbs.-115 lbs. Each
- ▶ Bottom Channel Guide SL-BCG (Page SL13)
- ▶ Snap-On Fascia (SL-SQ20) – Clear Anodized – Shown Above
- ▶ Sidewall Mount Brackets SWBP-BRKT (Page SL14)



# BY-PASS with FASCIA

## SLIDING DOOR HARDWARE

### ALUMINUM TOP MOUNT TRACK SYSTEM

- ▶ Commercial Grade for 1⅜" To 1¾" Doors
- ▶ For Sliding Doors up to 250 lbs. Each
- ▶ ANSI/BHMA A156.14 Grade 1 Certified to 100,000 Cycles Including Soft Close Feature
- ▶ Hangers with Heavy-Duty Ball Bearing Wheels
- ▶ Meets ADA Push Force Requirements
- ▶ 5-Year Warranty

### TWO DOOR SYSTEMS

SKU	TRACK LENGTH
SLAL-250-BPF-2DR-48	48"
SLAL-250-BPF-2DR-60	60"
SLAL-250-BPF-2DR-72	72"
SLAL-250-BPF-2DR-96	96"
SLAL-250-BPF-2DR-144	144"

#### Complete Kits Include:

- (1) Track – Mill Finish
- (2) Universal Hardware Packs,  
Each Consist Of:
  - (2) Ball Bearing Heavy Duty Hangers
  - (2) Snap-In Door Brackets
  - (2) In-Track Stops
  - (1) Angle Stop
  - (1) Bumper Stop
  - (1) Door Guide
- Heavy Duty Floor Guides

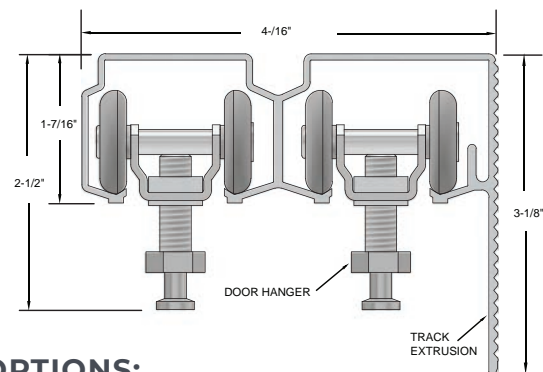


### FOUR DOOR SYSTEMS

SKU	TRACK LENGTH
SLAL-250-BPF-4DR-48	48"
SLAL-250-BPF-4DR-60	60"
SLAL-250-BPF-4DR-72	72"
SLAL-250-BPF-4DR-96	96"
SLAL-250-BPF-4DR-144	144"

#### Complete Kits Include:

- (1) Track – Mill Finish
- (4) Universal Hardware Packs,  
Each Consist Of:
  - (2) Ball Bearing Heavy Duty Hangers
  - (2) Snap-In Door Brackets
  - (2) In-Track Stops
  - (1) Angle Stop
  - (1) Bumper Stop
  - (1) Door Guide
- Heavy Duty Floor Guides



### OPTIONS:

- ▶ Soft Close / Open – Specify “SCBY”  
For Both Directions Order (2) Sets SCBY for Doors 120 lbs.-150 lbs. Each
- ▶ Light Duty Soft Close / Open - Specify SCBY-LITE  
Both Directions order 2 SCBY-LITE for Doors 65 lbs.-115 lbs. Each
- ▶ Bottom Channel Guide SL-BCG (Page SL13)
- ▶ Sidewall Mount Brackets SWBP-BRKT (Page SL14)

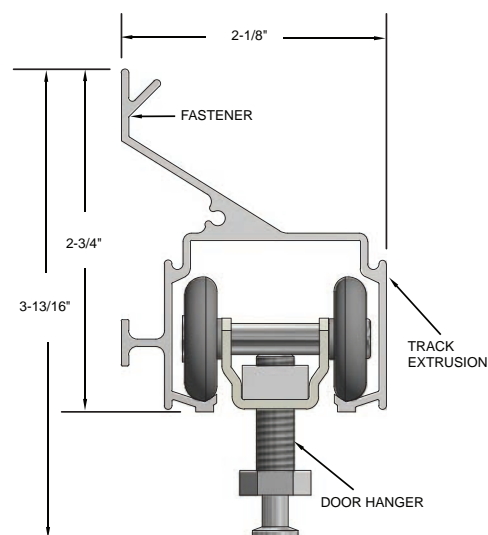
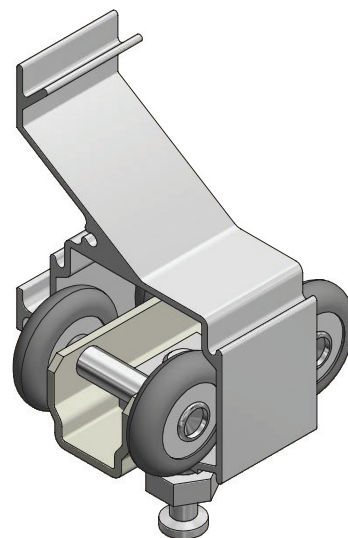
# SIDE WALL MOUNT

## SLIDING DOOR HARDWARE

### ALUMINUM TOP MOUNT TRACK SYSTEM

- ▶ Commercial Grade for 1 $\frac{3}{8}$ " To 1 $\frac{3}{4}$ " Doors
- ▶ For Sliding Doors up to 250 lbs. Each
- ▶ ANSI/BHMA A156.14 Grade 1 Certified to 100,000 Cycles Including Soft Close Feature
- ▶ Hangers with Heavy-Duty Ball Bearing Wheels
- ▶  $\frac{3}{8}$ " Clearance Between Wall and Door on 1 $\frac{3}{4}$ " Thick Doors
- ▶ Meets ADA Push Force Requirements
- ▶ 5-year Warranty

SKU	TRACK LENGTH
SLAL-250-SW-48	48"
SLAL-250-SW-60	60"
SLAL-250-SW-72	72"
SLAL-250-SW-96	96"
SLAL-250-SW-144	144"

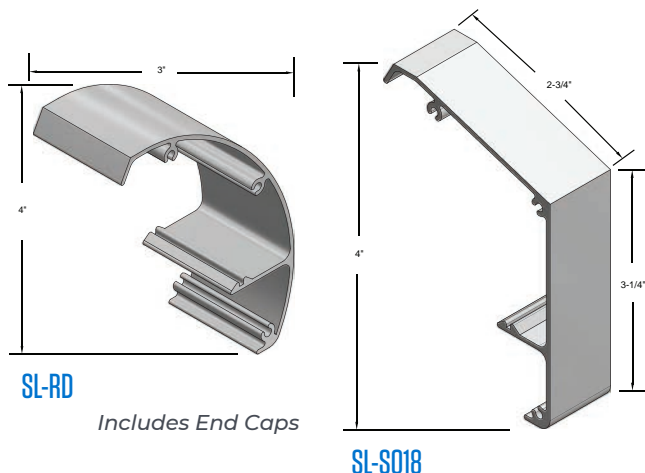


#### Complete Kits Include:

- (1) Track – Mill Finish
- (1) Universal Hardware Pack, Consists Of:
  - (2) Ball Bearing Heavy Duty Hangers
  - (2) Snap-In Door Brackets
  - (2) In-Track Stops
  - (1) Angle Stop
  - (1) Bumper Stop
  - (1) Door Guide
  - Heavy Duty Floor Guides

### OPTIONS:

- ▶ Soft Close / Open – Specify "SC" For Both Directions Order "SCBY" for Doors 120 lbs.-150 lbs. Each
- ▶ Light Duty Soft Close / Open - Specify SC-LITE For Both Directions Order "SCBY-LITE" for Doors 65 lbs.-115 lbs. Each
- ▶ Wall Mounted Guide SL-WG – included in Universal Hardware Pack (Page SL13)
- ▶ Bottom Channel Guide SL-BCG (Page SL13)
- ▶ Snap-on Fascias – Clear Anodized – Shown Right





# POCKET DOOR

## SLIDING DOOR HARDWARE

### ALUMINUM TOP MOUNT TRACK SYSTEM

- Commercial Grade for 1 $\frac{3}{8}$ " To 1 $\frac{3}{4}$ " Doors
- For Sliding Doors up to 250 lbs. Each
- ANSI/BHMA A156.14 Grade 1 Certified to 100,000 Cycles Including Soft Close Feature
- Hangers with Heavy Duty Ball Bearing Wheels
- Meets ADA Push Force Requirements
- 5-Year Warranty

SKU	TRACK LENGTH
SLAL-250-PD-48	48"
SLAL-250-PD-60	60"
SLAL-250-PD-72	72"
SLAL-250-PD-96	96"
SLAL-250-PD-144	144"



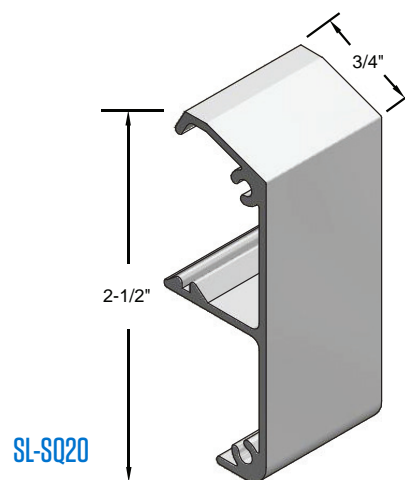
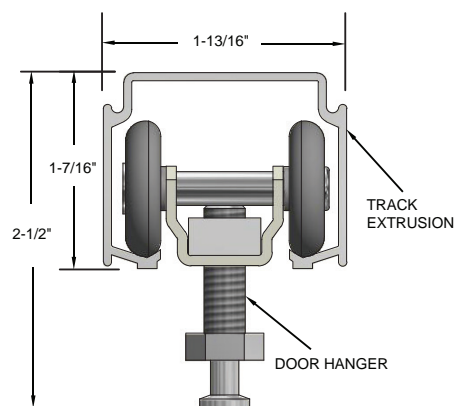
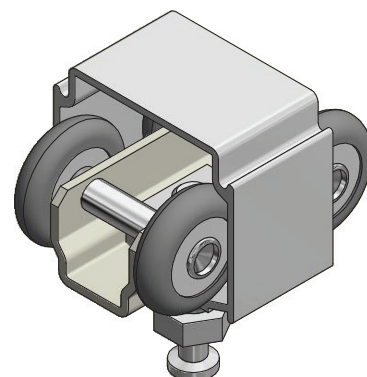
### Order two sets for Bi-Parting applications

#### Complete Kits Include:

- (1) Track – Mill Finish
- (1) Universal Hardware Pack, Consists Of:
  - (2) Ball Bearing Heavy Duty Hangers
  - (2) Snap-In Door Brackets
  - (2) In-Track Stops
  - (1) Angle Stop
  - (1) Bumper Stop
  - (1) Door Guide
  - Heavy Duty Floor Guides

### OPTIONS:

- Soft Close / Open – Specify "SC"  
For Both Directions Order "SCBY" for Doors 120 lbs.-150 lbs. Each
- Light Duty Soft Close / Open - Specify SC-LITE  
For Both Directions Order "SCBY-LITE" for Doors 65 lbs.-115 lbs. Each
- Wall Mounted Guide SL-WG (Page SL13)
- Bottom Channel Guide SL-BCG (Page SL13)
- Snap-On Fascia (SL-SQ20) – Clear Anodized – Shown Right



# POCKET DOOR

## SLIDING DOOR HARDWARE FRAME KIT

### ALUMINUM TOP MOUNT TRACK SYSTEM

- Commercial Grade for 1⅜" To 1¾" Doors
- For Sliding Doors up to 250 lbs. Each
- ANSI/BHMA A156.14 Grade 1 Certified to 100,000 Cycles Including Soft Close Feature
- Hangers with Heavy Duty Ball Bearing Wheels
- Meets ADA Push Force Requirements
- 5-year Warranty
- Patent Pending

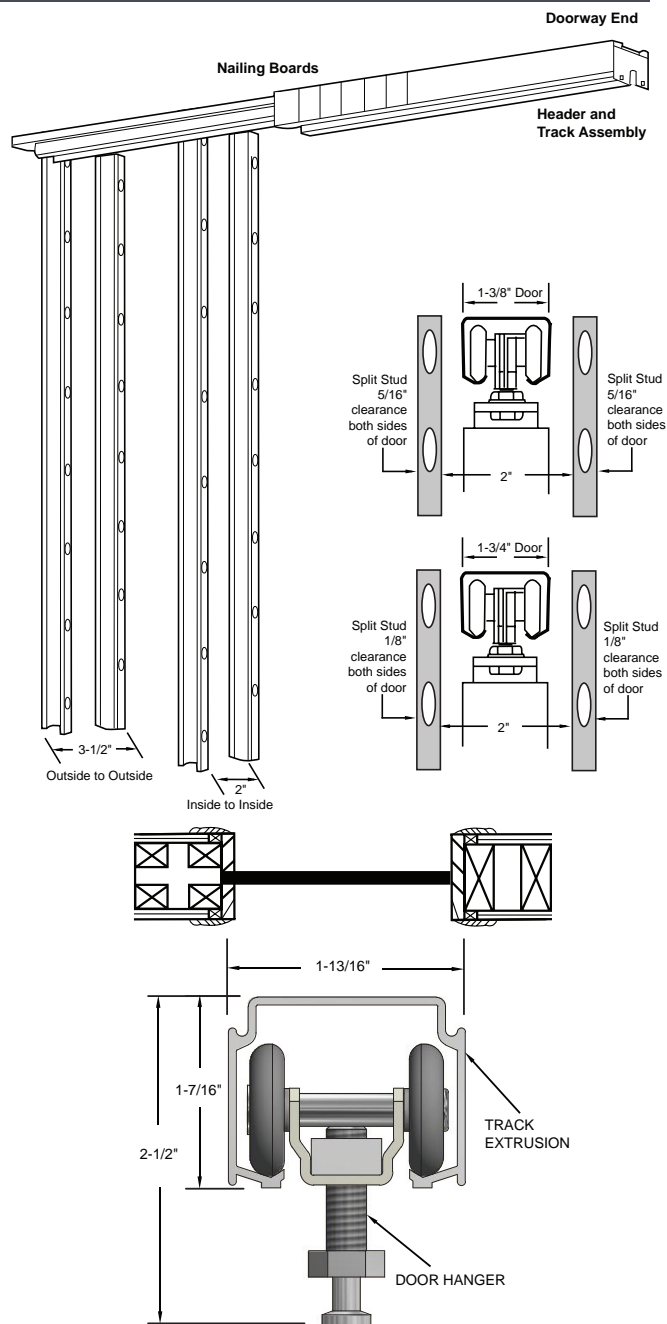


SKU	APPLICATION	FOR UP TO:
SLAL-250-PDKIT	4" Wood or Metal Stud	3/0 x 7/0
SLAL-250-PDKIT-48"DR	4" Wood or Metal Stud	4/0 x 7/0
SLAL-250-PDKIT-6	6" Wood Stud (5½" Header)	3/0 x 7/0
SLAL-250-PDKIT-6-48"	6" Wood Stud (5½" Header)	4/0 x 7/0
SLAL-250-PDKIT-6M	6" Metal Stud (6" Header)	3/0 x 7/0
SLAL-250-PDKIT-6M-48"	6" Metal Stud (6" Header)	4/0 x 7/0

### Order two sets for Bi-Parting applications

#### Complete Kits Include:

- (1) **Header Track Assembly**
- (1) **Universal Hardware Pack,**  
Consists Of:
  - (2) Ball Bearing Heavy Duty Hangers
  - (2) Snap-In Door Brackets
  - (2) In-Track Stops
  - (1) Angle Stop
  - (1) Bumper Stop
  - (1) Door Guide
  - (1) 1¾" Thick Door Adaptor Kit
- (1) **Pocket Frame Kit**
  - Jamb Stiffeners
    - (4) 36" Openings
    - (6) 48" Openings
  - Floor Brackets
    - (2) 36" Openings
    - (3) 48" Openings
  - (1) End Bracket



### OPTIONS:

- Soft Close / Open – Specify “SC”  
For Both Directions Order “SCBY” for Doors 120 lbs.-150 lbs. Each
- Light Duty Soft Close / Open - Specify SC-LITE  
For Both Directions Order “SCBY-LITE” for Doors 65 lbs.-115 lbs. Each
- Wall Mounted Bottom Guide SL-WG
- Bottom Channel Guide SL-BCG (Page SL13)
- Converging Kit Used to Join Headers in Bi-Part Openings "SLAL-CNVG-KIT"

# POCKET DOOR

## SLIDING DOOR HARDWARE FRAME KIT FOR UP TO 9/0 DOORS

### ALUMINUM TOP MOUNT TRACK SYSTEM

- ▶ Commercial Grade for 1 $\frac{3}{8}$ " To 1 $\frac{3}{4}$ " Doors
- ▶ For Sliding Doors up to 250 lbs. Each
- ▶ ANSI/BHMA A156.14 Grade 1 Certified to 100,000 Cycles Including Soft Close Feature
- ▶ Hangers with Heavy Duty Ball Bearing Wheels
- ▶ Meets ADA Push Force Requirements
- ▶ 5-year Warranty
- ▶ Patent Pending

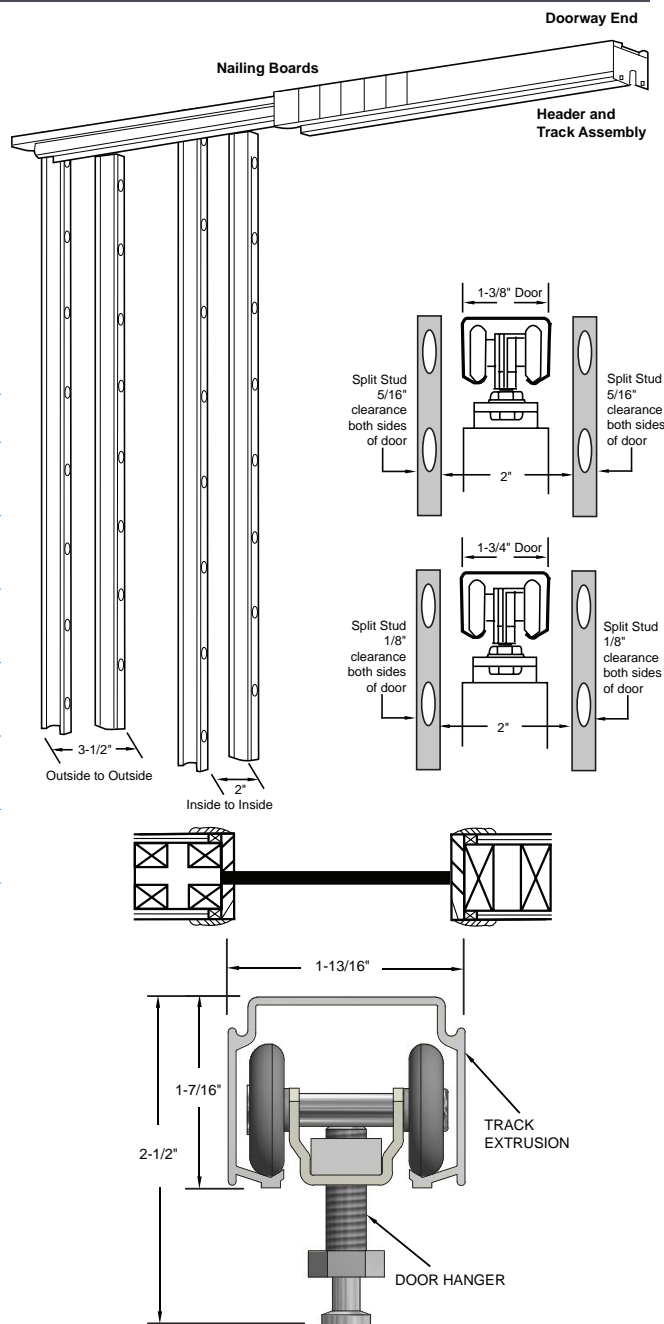


SKU	APPLICATION	FOR UP TO:
SLAL-250-PDKIT-EXT	4" Wood or Metal Stud	3/0 x 9/0
SLAL-250-PDKT-EXT-48	4" Wood or Metal Stud	4/0 x 9/0
SLAL-250-PDKIT-6-EXT	6" Wood Stud (5 $\frac{1}{2}$ " Header)	3/0 x 9/0
SLAL-250-PDK-6-EXT48"	6" Wood Stud (5 $\frac{1}{2}$ " Header)	4/0 x 9/0
SLAL-250-PDKT-6M-EXT	6" Metal Stud (6" Header)	3/0 x 9/0
SLAL-250-PK-6M-EXT48	6" Metal Stud (6" Header)	4/0 x 9/0

### Order two sets for Bi-Parting applications

#### Complete Kits Include:

- (1) Header Track Assembly
- (1) Universal Hardware Pack, Consists Of:
  - (2) Ball Bearing Heavy Duty Hangers
  - (2) Snap-In Door Brackets
  - (2) In-Track Stops
  - (1) Angle Stop
  - (1) Bumper Stop
  - (1) Door Guide
  - (1) 1 $\frac{3}{4}$ " Thick Door Adaptor Kit Included in 2x4 Stud Wall Kits
- (1) Pocket Frame Kit
  - Jamb Stiffeners
    - (4) 36" Openings
    - (6) 48" Openings
  - (4) Jamb Stiffener Extensions
  - (4) Jamb Splice Brackets
  - Floor Brackets
    - (2) 36" Openings
    - (3) 48" Openings
  - (1) End Bracket



### OPTIONS:

- ▶ Soft Close / Open – Specify “SC”  
For Both Directions Order “SCBY” for Doors 120 lbs.-150 lbs. Each
- ▶ Light Duty Soft Close / Open - Specify SC-LITE  
For Both Directions Order “SCBY-LITE” for Doors 65 lbs.-115 lbs. Each
- ▶ Wall Mounted Bottom Guide SL-WG
- ▶ Bottom Channel Guide SL-BCG (Page SL13)
- ▶ Converging Kit Used to Join Headers in Bi-Part Openings “SLAL-CNVG-KIT”

# BARN DOOR TOP MOUNT

## SLIDING DOOR HARDWARE

- Fits 1" To 2" Thick Door Panel
- Brushed Stainless Steel 304
- Side Wall Mount
- Nylon Coated Stainless Steel Wheels for Smooth Operation
- For Sliding Doors up to 220 lbs. Each
- Meets ADA Push Force Requirements
- 5 year Warranty
- Order Two Sets for Bi-parting Applications



### STAINLESS STEEL TOP MOUNT ROUND TRACK SYSTEM

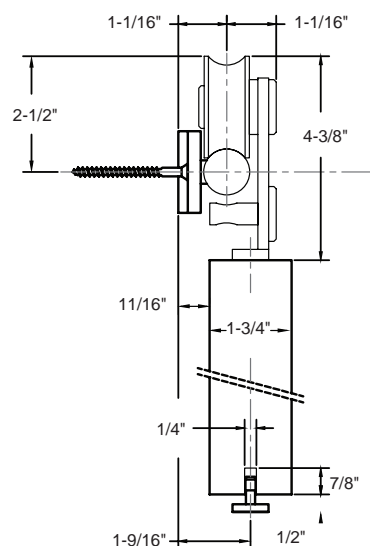
SKU	TRACK LENGTH
SLSS1-6	78 <sup>3</sup> / <sub>4</sub> "
SLSS1-8	98 <sup>7</sup> / <sub>16</sub> "

*Complete Kits Include:*

- |             |                 |
|-------------|-----------------|
| (1) Track   | (2) Door Stops  |
| (2) Hangers | (1) Floor Guide |

SLSS1-6 includes: (5) Wall Attachments

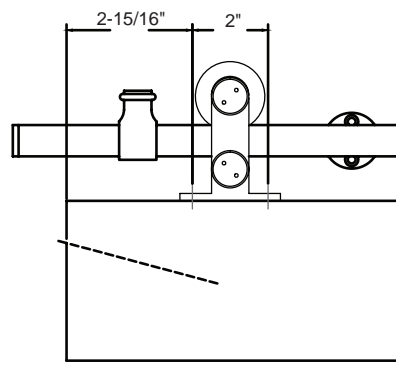
SLSS1-8 includes: (6) Wall Attachments



### STAINLESS STEEL TOP MOUNT ROUND TRACK SYSTEM (WITH SOFT CLOSE)

SKU	TRACK LENGTH
SLSS1-6-SC*	78 <sup>3</sup> / <sub>4</sub> "
SLSS1-8-SC*	98 <sup>7</sup> / <sub>16</sub> "

\* Soft Close / Open Hardware is Included for Both Directions in Addition to the SLSS1-6 and SLSS1-8 Complete Kit Contents



# BARN DOOR SIDE MOUNT

## SLIDING DOOR HARDWARE

- ▶ Fits 1 $\frac{3}{8}$ " To 1 $\frac{3}{4}$ " Thick Door Panel
- ▶ Brushed Stainless Steel 304
- ▶ Side Wall Mount
- ▶ Nylon Coated Stainless Steel Wheels for Smooth Operation
- ▶ For Sliding Doors up to 220 lbs. Each
- ▶ Meets ADA Push Force Requirements
- ▶ 5 year Warranty
- ▶ Order Two Sets for Bi-parting Applications



### STAINLESS STEEL SIDE MOUNT ROUND TRACK SYSTEM

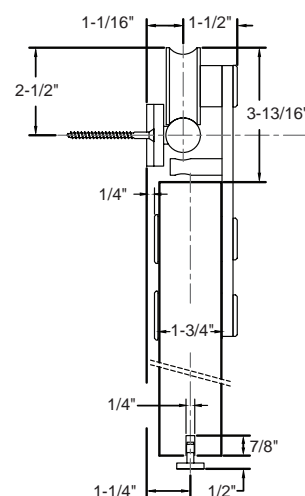
SKU	TRACK LENGTH
SLSS2-6	78 $\frac{3}{4}$ "
SLSS2-8	98 $\frac{7}{16}$ "

*Complete Kits Include:*

- |             |                 |
|-------------|-----------------|
| (1) Track   | (2) Door Stops  |
| (2) Hangers | (1) Floor Guide |

SLSS2-6 includes: (5) Wall Attachments

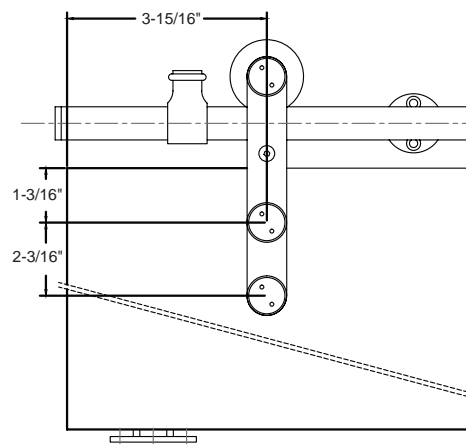
SLSS2-8 includes: (6) Wall Attachments



### STAINLESS STEEL SIDE MOUNT ROUND TRACK SYSTEM (WITH SOFT CLOSE)

SKU	TRACK LENGTH
SLSS2-6-SC*	78 $\frac{3}{4}$ "
SLSS2-8-SC*	98 $\frac{7}{16}$ "

\* Soft Close / Open Hardware is Included for Both Directions in Addition to the SLSS2-6 and SLSS2-8 Complete Kit Contents



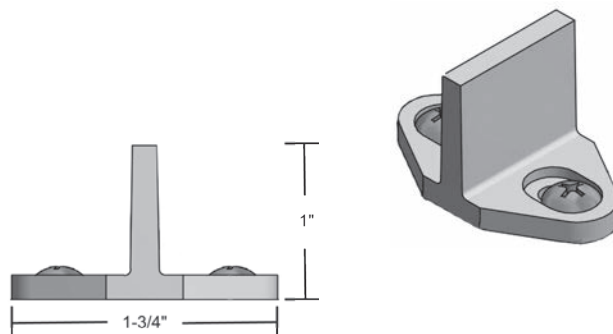
# ACCESSORIES

## SLIDING DOOR HARDWARE

### FLOOR GUIDE

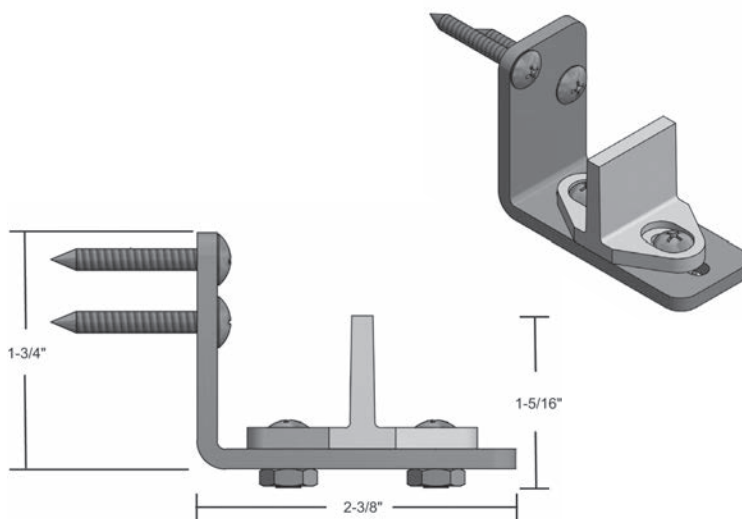
- Furnished Standard with Stainless Steel and Commercial Grade Aluminum Sliding Door Hardware Sets

SKU	MATERIAL/FINISH
SLSS-FG	Black Nylon



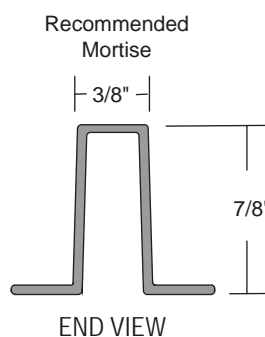
### WALL MOUNTED GUIDE

SKU	MATERIAL/FINISH
SL-WG	Black Nylon Floor Guide on Steel Bracket Dark Bronze Powder Coat #8-18 x 1-1/4" Truss Head Self-Tapping Screws



### BOTTOM CHANNEL GUIDE

SKU	MATERIAL/LENGTH/COLOR
SL-BCG	Polypropylene 60" Dark Brown





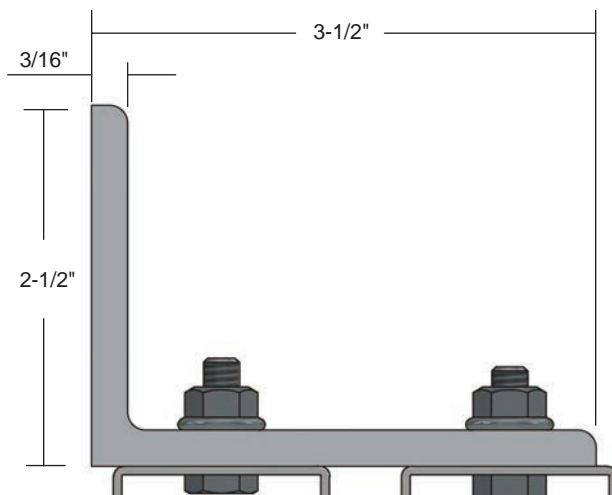
# ACCESSORIES

## SLIDING DOOR HARDWARE

### SIDEWALL MOUNT BY-PASS BRACKET

SKU	MATERIAL/LENGTH/COLOR
SWBP-BRKT	$\frac{3}{16}$ " Steel Gray Finish

Use 3" from each end and not more than 24" on center

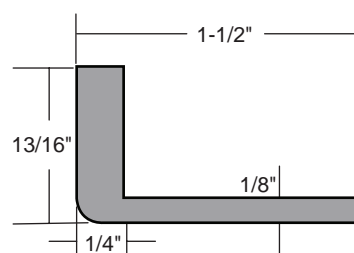


Fasteners not furnished

### SIDEWALL MOUNT LOW-PROFILE BRACKET

SKU	MATERIAL/LENGTH/COLOR
SWPD-LPBRKT	$1\frac{5}{8}$ " Length Mill Finish Aluminum

Use 3" from each end and not more than 24" on center



# ACCESSORIES

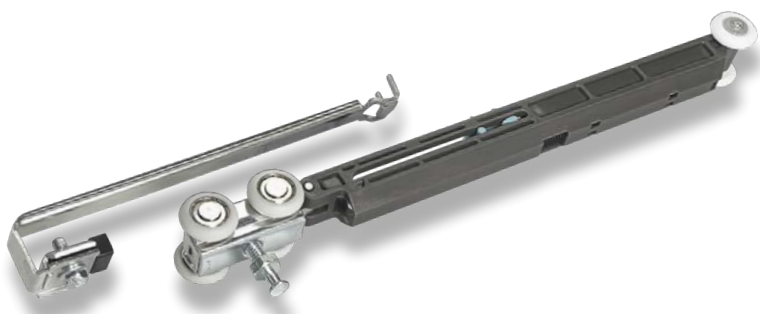
## FOR ALUMINUM SLIDING DOOR HARDWARE

### SOFT CLOSE OPTIONS

#### SC

**For Single Sliding Aluminum Hardware Sets with Doors 120 lbs. – 150 lbs.**

- Designed for Doors 120 lbs. – 150 lbs.
- Minimum Door Width When Using One Soft Close Device on a Single Door is 16"
- Minimum Door Width When Using Two Soft Close Devices for Soft Close Both Directions on a Single Door is 31"
- Slows Travel of the Door to Softly Close
- Soft Close for Single Sliding Aluminum Hardware Sets
- For Both Directions Order SCBY



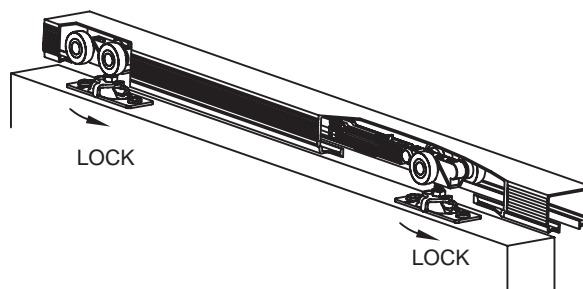
#### Ordering Info

SC	Single
SCBY	Set of Two

#### SC-LITE

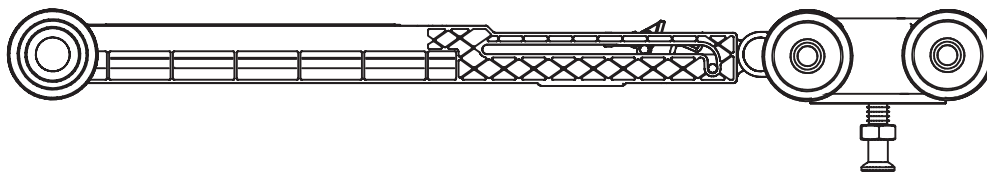
**For Single Sliding Aluminum Hardware Sets with Doors 65 lbs. – 115 lbs.**

- Designed for Doors 65 lbs. – 115 lbs.
- Minimum Door Width When Using One Soft Close Device on a Single Door is 12.5"
- Minimum Door Width When Using Two Soft Close Devices for Soft Close Both Directions on a Single Door is 25"
- Slows Travel of the Door to Softly Close
- For By-Pass and Bi-Parting Sliding Aluminum Hardware Sets. For Both Directions Order (2) Sets SCBY-LITE
- For Soft Close Both Directions on Sidewall and Pocket Door Applications



#### Ordering Info

SC-LITE	Single
SCBY-LITE	Set of Two



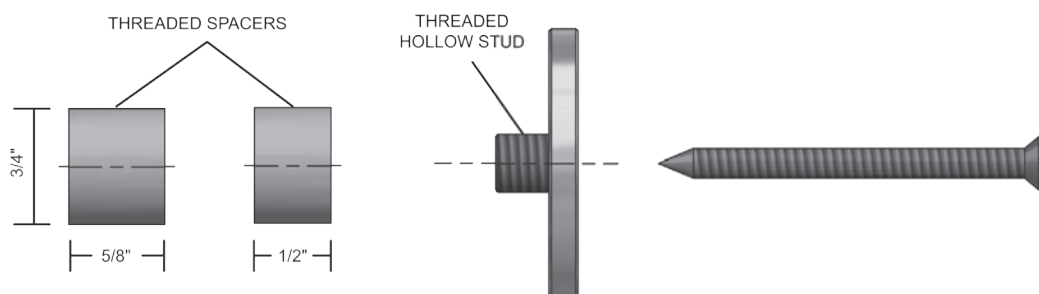
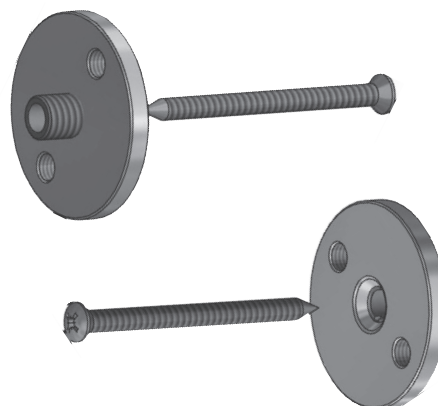
# ACCESSORIES

## FOR STAINLESS STEEL TRACK

### DRYWALL SPACER

- ▶ Spacer Kits Include Two Sizes of Spacers  
Allowing Installation Directly to the Blocking  
Behind the Drywall
- ▶ The Finished Stainless Steel Plate  
Accepts Mounting of the SLSS Track

SKU	# OF SPACERS/TRACK LENGTH
SLSS-DWS-6	5 Total Spacers/6' Track
SLSS-DWS-8	6 Total Spacers/8' Track



# ACCESSORIES

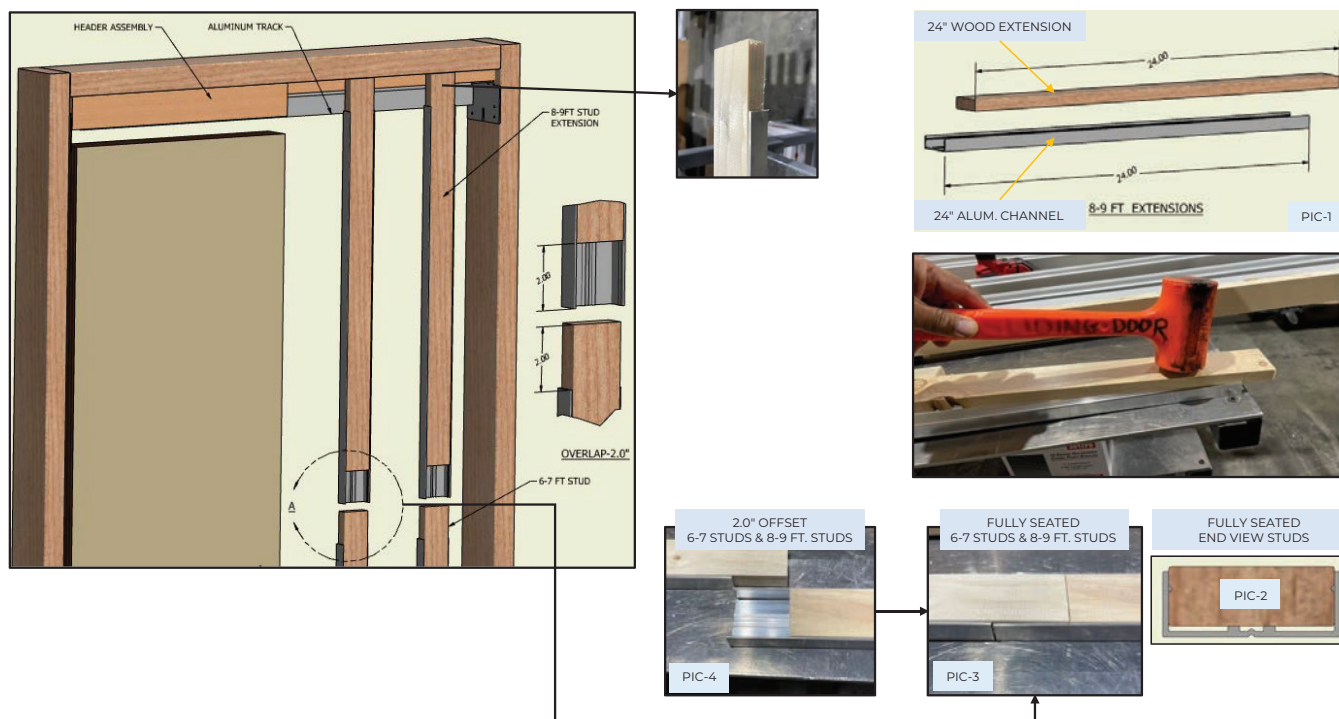
## POCKET DOOR KIT-7'-9" EXTENSION KIT

### SLAL EXT KIT, SLAL EXT KIT 48"DR

▶ Pocket Door Frame Extension Kits Include:

- + SLAL EXT KIT: 4 ea. Wood Frame Extensions, 4 ea. Aluminum Frame Extensions
- + SLAL EXT KIT 48"DR: 6 ea. Wood Frame Extensions, 6 ea. Aluminum Frame Extensions

▶ Allows Standard PDKIT to be Extended for Use on Door Opening Heights up to 9'



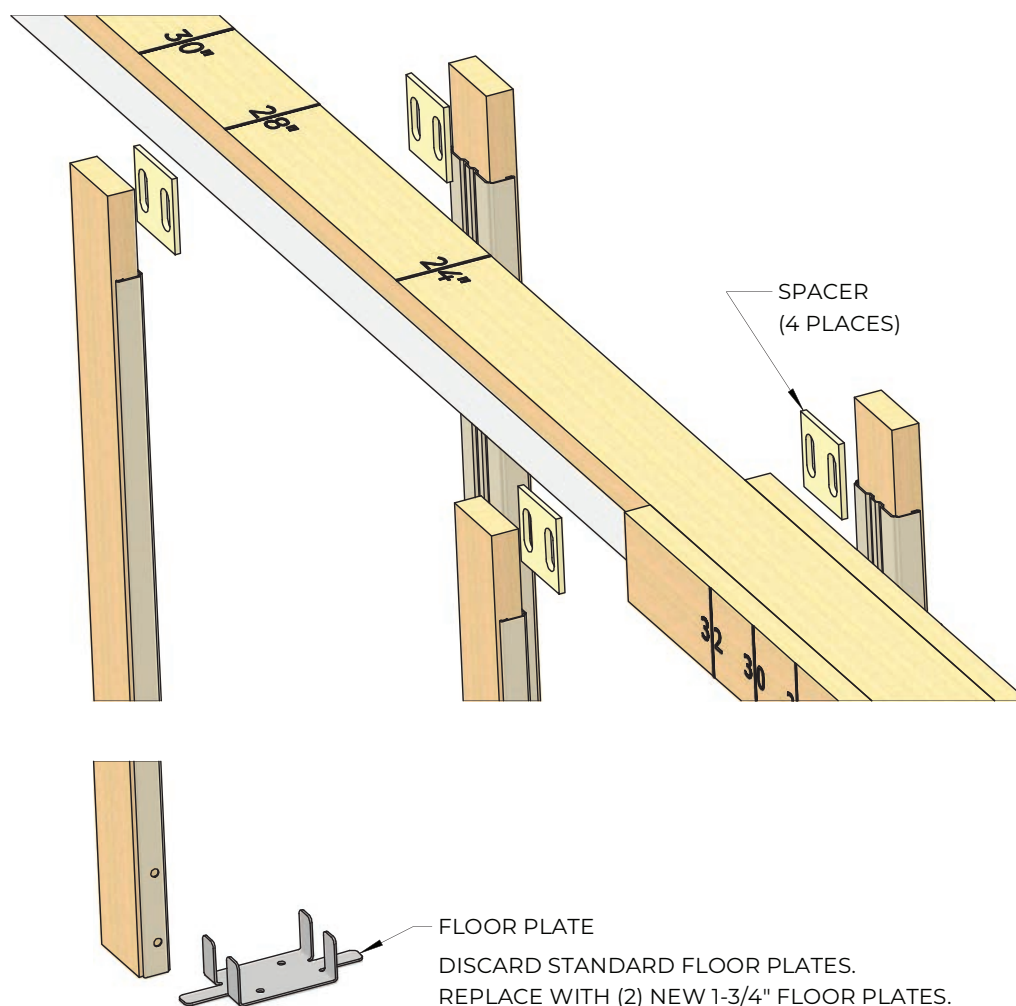
# ACCESSORIES

## SLIDING DOOR HARDWARE

### ADAPTER KIT

- Used When Installing 1 $\frac{3}{4}$ " thick doors with SLAL-250-PDKIT, SLAL-250-PDKIT-EXT, SLAL-250-PDKIT-48"DR and SLAL-250-PDKT-EXT-48
- Includes 4 upper Spacers and 2 Floor Brackets to Accommodate for 1 $\frac{3}{4}$ " thick doors
- SLAL-250-PDKIT-48"DR and SLAL-250-PDKT-EXT-48 come with 6 split studs. SLAL-134-KIT comes with 4 spacers and 2 floor plates. Be sure to order enough SLAL-134-KIT for 6 split studs per opening

SKU	MATERIAL/FINISH
SLAL-134-KIT	Nylon Spacers / Zinc Coated Steel Floor Plates



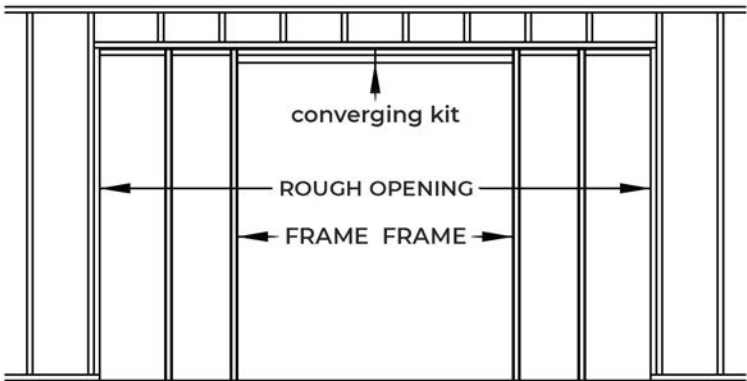
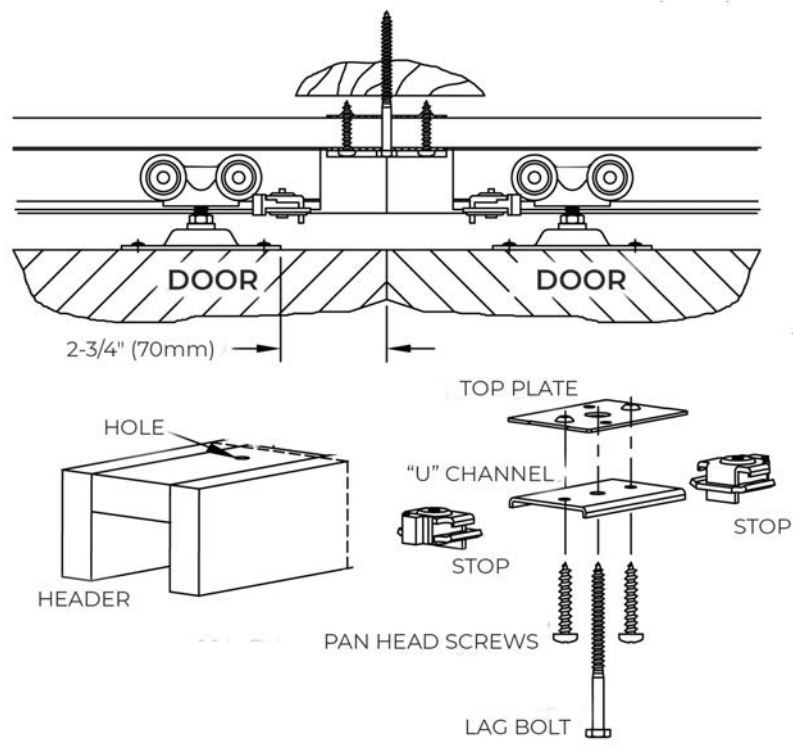
# ACCESSORIES

## SLIDING DOOR HARDWARE

### CONVERGING KIT

- Used When Joining Two PDKIT Headers Together for a Bi-Part Pocket Opening
- Includes 2 Mounting Plates, 2 Pan Head Screws and 1 Lag Bolt

SKU	MATERIAL/FINISH
SLAL-CNVG-KIT	Zinc Coated Steel





# NOTES

---

# NOTES

---

# NOTES

---



For the most up-to-date  
Sliding Door Hardware  
Catalog scan the QR code  
or visit [ngp.com](http://ngp.com).



**[ngp.com](http://ngp.com)**  
**1-800-NGP-RUSH**

FAX: (800) 255-7874  
QUOTES: [quotes@ngp.com](mailto:quotes@ngp.com)  
ORDERS: [orders@ngp.com](mailto:orders@ngp.com)

**NGP MEMPHIS**  
4985 East Raines Road  
Memphis, TN 38118

**CARSON CITY**  
3689 Arrowhead Drive  
Carson City, NV 89706